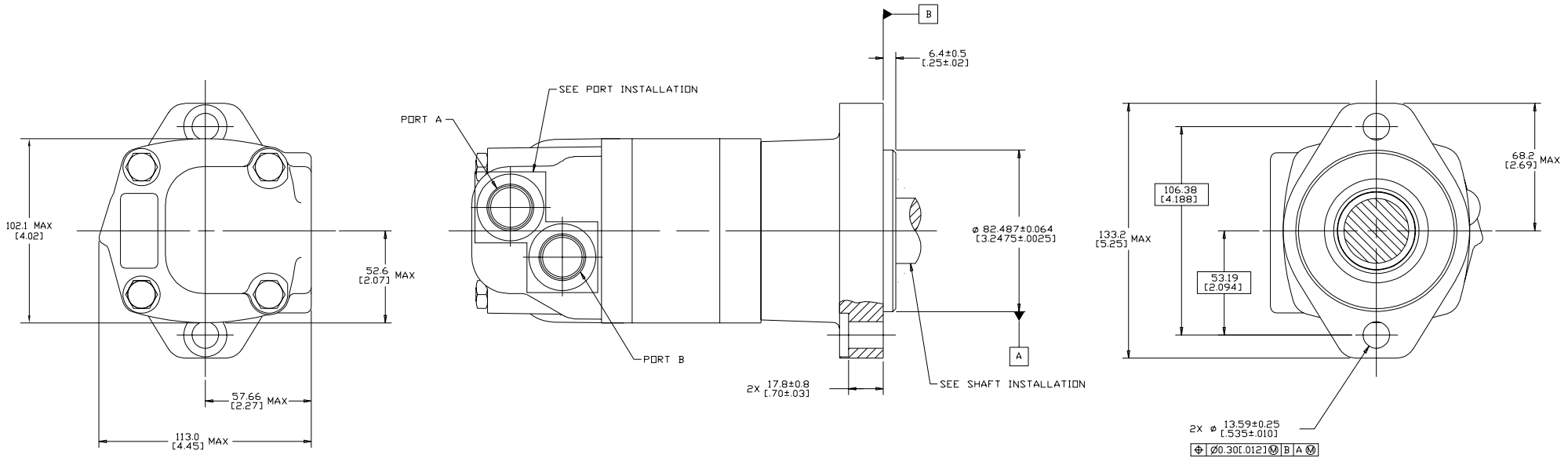


SYM	REVISION	BY	DATE	ECN
A	ENGINEERING RELEASE	RAF	3/4/93	23726
B	REVISED	AGJ	5-26-93	22833
C	(1A)ADDED DISTRIBUTION CODE C	CMR	8-19-98	31690
D	(4A)NOTE 2 WAS MOUNTING TYPE: C	AGJ	5-18-02	41044
E	REVISED	VJB	6-23-09	M71199B
F	REVISED AS PER STACK-UP -2>DRAWING UPDATED AS PER ASME Y14.5-2009 STANDARD	JVD	04-10-15	M96311



NOTE

1 ROTATION:  
 STANDARD: WHEN FACING SHAFT END OF MOTOR, SHAFT TO ROTATE;  
 CLOCKWISE WHEN PORT "A" IS PRESSURIZED  
 COUNTERCLOCKWISE WHEN PORT "B" IS PRESSURIZED  
 REVERSE: WHEN FACING SHAFT END OF MOTOR, SHAFT TO ROTATE;  
 COUNTERCLOCKWISE WHEN PORT "B" IS PRESSURIZED  
 CLOCKWISE WHEN PORT "A" IS PRESSURIZED

2 MOUNTING TYPE: AC  
 STANDARD, 2 BOLT: Ø 82.6 [3.25] PILOT  
 Ø 13.59 [0.535] HOLES ON Ø 106.4 [4.19]  
 BOLT CIRCLE \*SAE A\*

**REVIEWED FOR CLASSIFICATION PER ESP-042**

UNLESS OTHERWISE SPECIFIED ALL DIMENSIONS ARE IN INCHES		DRAWING BASED ON ASME Y14.5-2009	
MILLIMETERS (CHECKED)		EATON CORPORATION - CONFIDENTIAL AND PROPRIETARY NOTICE TO PURCHASER RECEIVING THIS DRAWING: THIS DRAWING IS THE PROPERTY OF EATON CORPORATION AND IS NOT TO BE REPRODUCED, COPIED, OR TRANSMITTED IN ANY FORM OR BY ANY MEANS, ELECTRONIC OR MECHANICAL, INCLUDING PHOTOCOPYING, RECORDING, OR BY ANY INFORMATION STORAGE AND RETRIEVAL SYSTEM, WITHOUT THE WRITTEN PERMISSION OF EATON CORPORATION. AT 1020 WISCONSIN ST., MILWAUKEE, WI 53212 USA	
TOLERANCES	XX ± REF XXX ± ONLY	DATE: 3-11-93 BY: RAJ	MATERIAL/HEAT TREAT
UNSPECIFIED RADI ARE:	----	DATE: 3-16-93 BY: S.RICHARDS	----
UNSPECIFIED DRAFT ANGLES ARE:	-----*	DATE: 3-17-93 BY: M.BERNSTROM	TITLE
D SIZE	THIRD ANGLE PROJECTION DO NOT SCALE	DATE: 3-17-93 BY: M.BERNSTROM	2000 SERIES MOTOR INSTALLATION
		NUMBER OF SHEETS	NUMBER
		SCALE 1/1	A-665-001
		SHEET 1 OF 1	