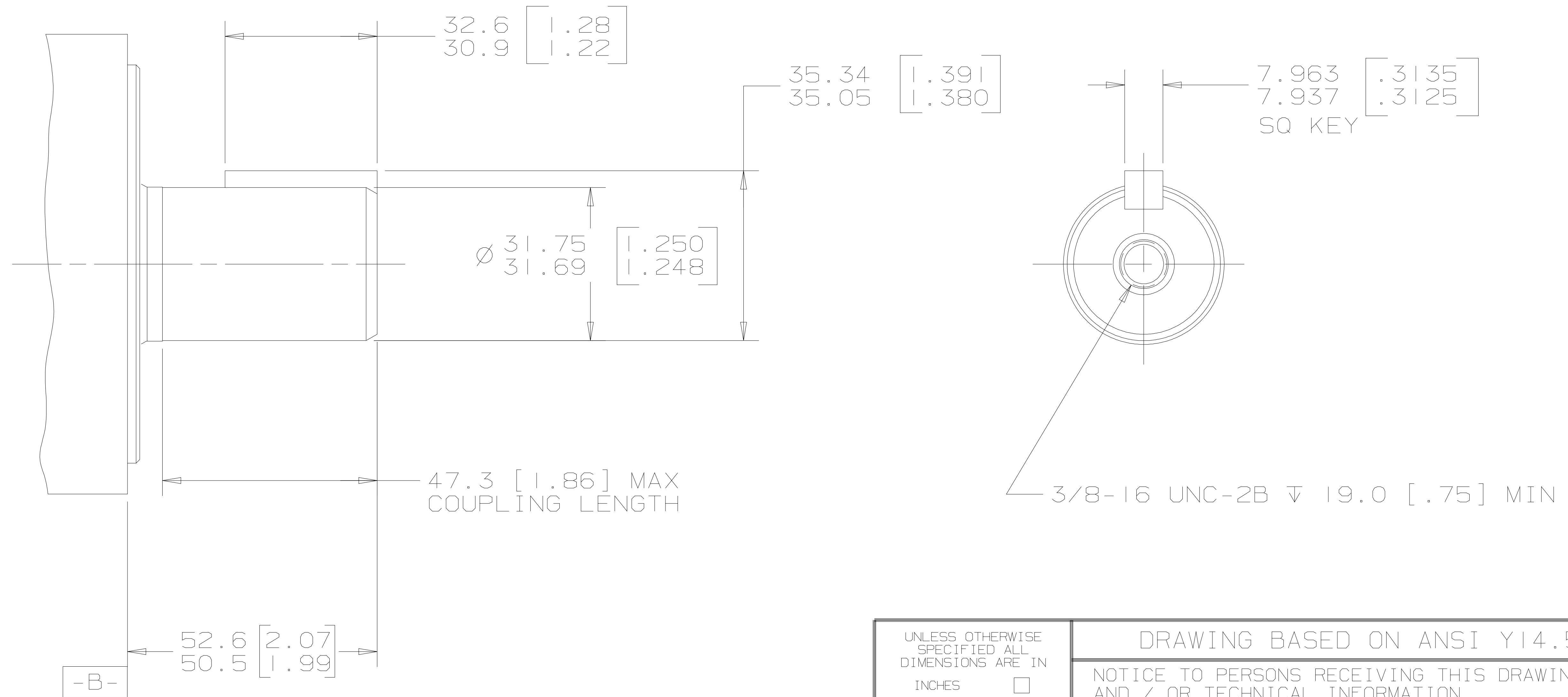


REV	DESCRIPTION	BY	DATE	ECN
A	ENGINEERING RELEASE	RAF	5/20/93	MI0742A
B	ADD SHAFT OPTION 28 TO NOTE 2	AGJ	5-26-93	22833
C	WAS 2 OUTPUT SHAFT: OPTION 04 & 28	MGF		32117
D	NOTE 1 WAS MOUNTING TYPE: OPTION J	AGJ	5-13-02	41044
E	52.6/50.5 [2.07/1.99] WAS 53.1/50.2 [2.09/1.98]	AGJ	5-17-04	47918
F	NOTE 2 WAS OUTPUT SHAFT: OPTION 02 & 24	PM	4-4-06	54522



G K S

NOTE

- 1 MOUNTING TYPE: OPTION AJ
- 2 OUTPUT SHAFT: OPTION 02 & 17

UNLESS OTHERWISE SPECIFIED ALL DIMENSIONS ARE IN		DRAWING BASED ON ANSI Y14.5M-1982	
INCHES <input type="checkbox"/>	MILLIMETERS [INCHES] <input checked="" type="checkbox"/>	NOTICE TO PERSONS RECEIVING THIS DRAWING AND / OR TECHNICAL INFORMATION	
<p>TOLERANCES</p> <p>.X ±----</p> <p>.XX ±REF</p> <p>.XXX ±ONLY</p> <p>< ±----</p>		<p>Eaton Corporation claims proprietary rights in the information disclosed hereon. This document is issued in confidence and is not to be reproduced or used to manufacture anything shown hereon without the written permission of the Eaton Corporation.</p>	
<p>UNSPECIFIED RADII ARE</p> <p>----</p>		<p>DRAWN BY/DATE: RAF 5/21/93</p> <p>CHECKED BY/DATE: K. RANDOLPH 5-21-93</p> <p>ENGRG BY/DATE: S. ZUMBUSCH 5-21-93</p> <p>METALLURGY BY/DATE: -----</p>	<p>MATERIAL/HEAT TREAT</p> <p>TITLE: 2000 SERIES MOTOR SHAFT INSTALLATION</p>
<p>UNSPECIFIED DRAFT ANGLES ARE</p> <p>----</p>		<p>THIRD ANGLE PROJECTION</p> <p>DO NOT SCALE</p>	<p>NUMBER: A-688-002</p> <p>SCALE: 1/1</p> <p>SHEET: 1 OF 1</p>
<p>DRAWING FORMAT CADD <input checked="" type="checkbox"/> MANUAL <input type="checkbox"/></p>		<p>ARITHMETICAL AVERAGE <input checked="" type="checkbox"/></p>	

